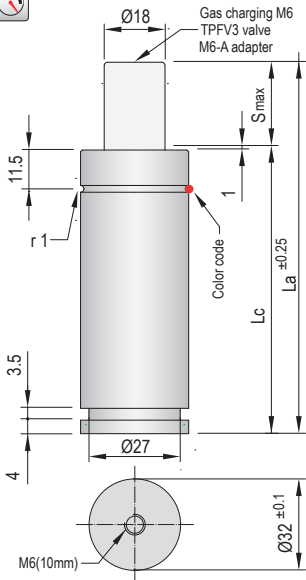


VDI SAFETY



- MICRO
- TITAN
- TPH
- TPS
- TPSP
- TPF
- TPK
- TPC
- TPR
- TPB
- TPHC
- TPA**
- TPG**

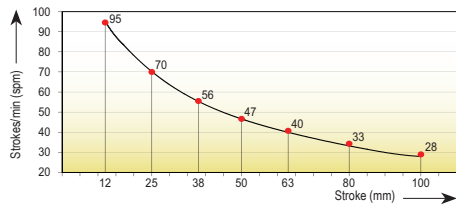


i Pressure medium **Nitrogen (N₂)**

Max. charging pressure	175 Bar
Min. charging pressure	25 Bar
Rod seal area	2,54 cm ²
Operating temperature	0°C - 80°C
Force increase by temperature	0,33 %/°C
Max. stem speed	1,6 m/s
Maintenance kit	Kit GP32



Maximum strokes / minute (at 20°C)

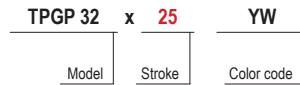


Code	Smax mm	La mm	Lc mm	V l	Kg
TPGP 32x12	12	84	72	0,008	0,36
TPGP 32x25	25	110	85	0,017	0,37
TPGP 32x38	38	136	98	0,025	0,41
TPGP 32x50	50	160	110	0,033	0,48
TPGP 32x63	63	186	123	0,041	0,49
TPGP 32x80	80	220	140	0,052	0,57
TPGP 32x100	100	260	160	0,065	0,65

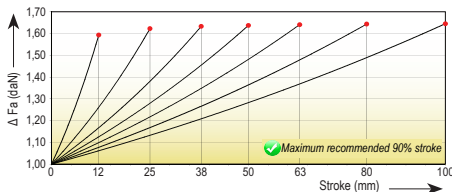
Color code	Fa daN	90% F daN	P Bar
GR (Green)	100 (±10)	≈ 155	40
BL (Blue)	200 (±15)	≈ 310	80
RD (Red)	300 (±20)	≈ 470	120
YW (Yellow)	450 (±20)	≈ 685	175
(Other forces)	60 - 450	≈ 25-685	25 - 175

The black color code denotes a different pressure from that which the customer could choose when ordering between the minimum charging pressure and the maximum charging pressure. If not otherwise specified, the gas spring will be supplied in the yellow code version (YW).

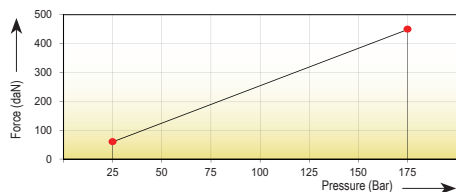
How to order



Force/stroke ratio



Initial force/charging pressure ratio



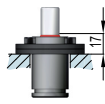
Assembly possibilities



DROP-IN



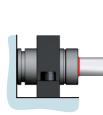
SCREWS



FS 32-FSC 32/1



FP 32-FPR 32



FI 32-FI 32/1